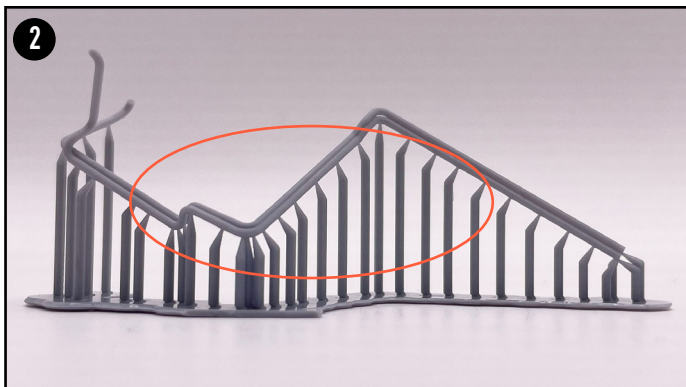
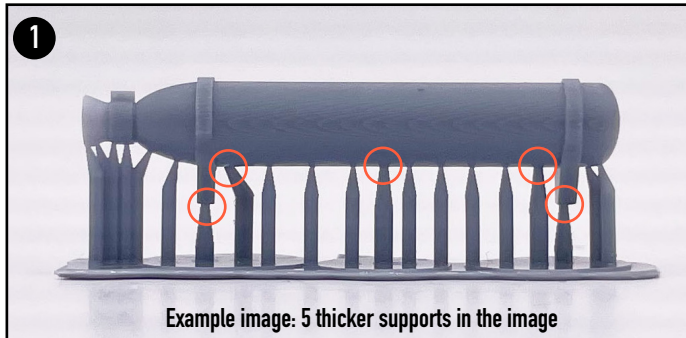


INSTRUCTIONS TO DIESEL FRAME

A few tips for removing supports from parts:

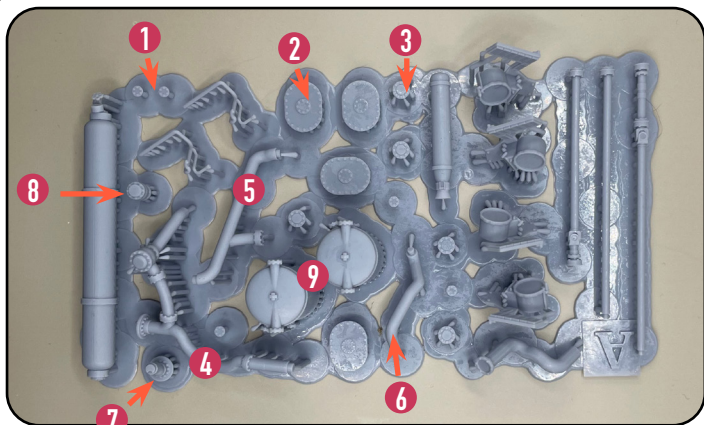
- Use side cutters or a SHARP knife
- When cutting the support, also support it with your finger on the other side
- First remove the parts from each other and then from the supports
- There is two sizes of supports. Remove the thick ones first. The smaller ones may even detach themselves after that. See picture 1
- In the thinnest pipes, I recommended to start removing the supports in the middle and proceed to the ends. But before that the thick ones. See picture 2.
- The set includes a few spare parts



Modifications

- When you install the frame, you need to cut a place for the frame in the bulkhead.

If some parts look different in the instructions than the kit. You just received the updated part. The better one

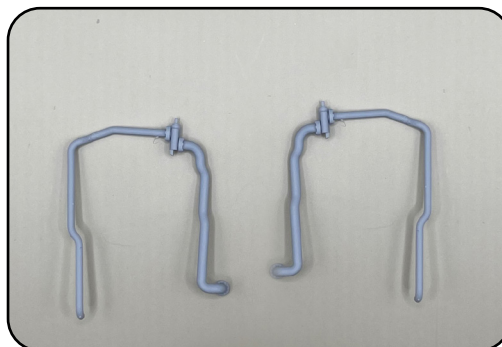
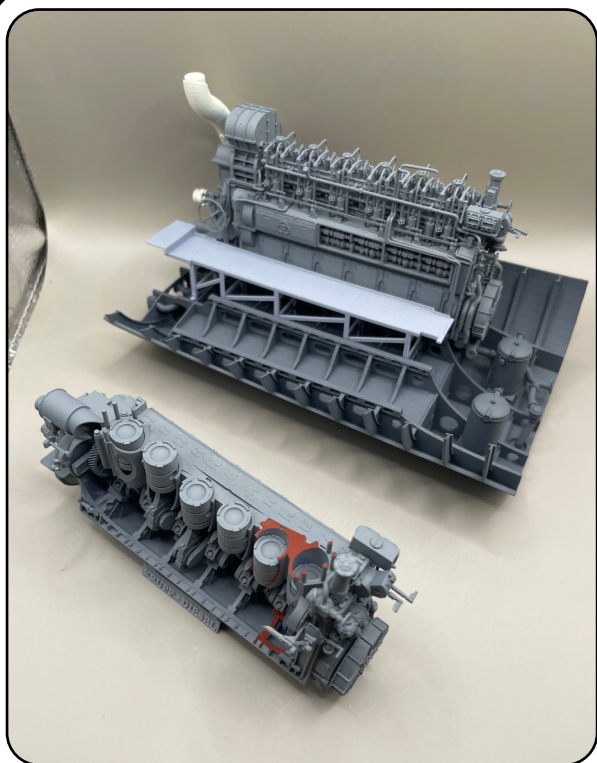
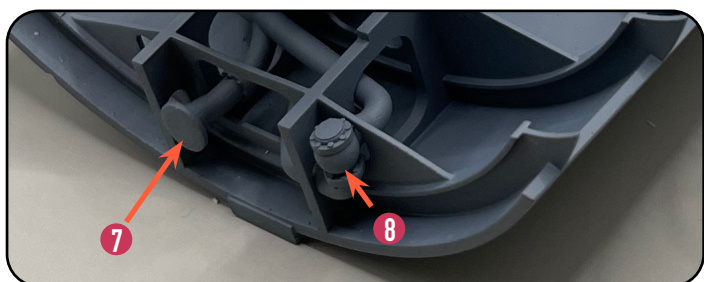
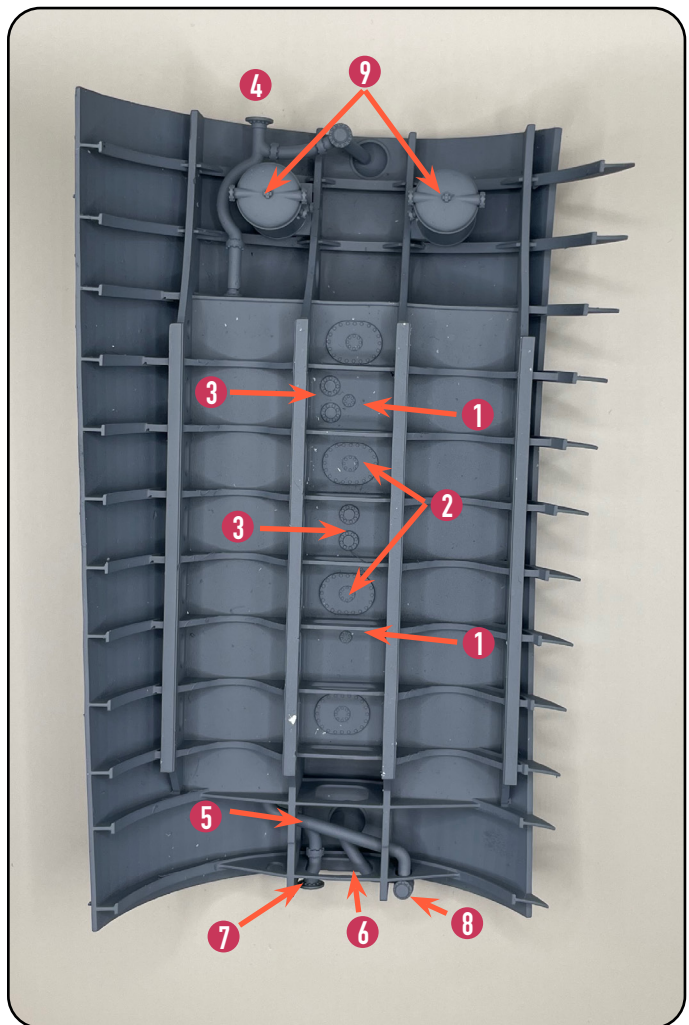


STEP 1

First insert parts 1-3. After that the bilge pipe (4).

Glue part (8) to part (6). Glue first pipe (5) to frame, then pipe (6) and last pipe (7).

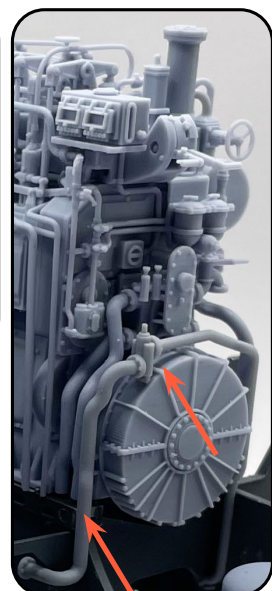
Glue both oilcoolers (9)

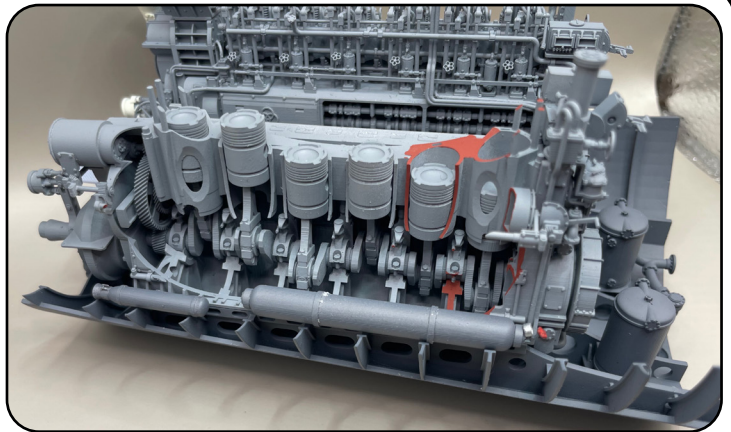
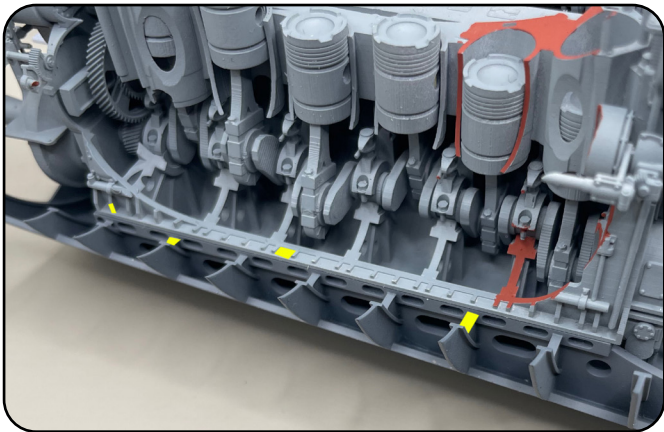


STEP 2

Insert first the floor opposite the Rear Torpedo Room. Now you are ready to install the diesel engines.

Now install the U-shaped pipes that remained from the other parts to both engines.

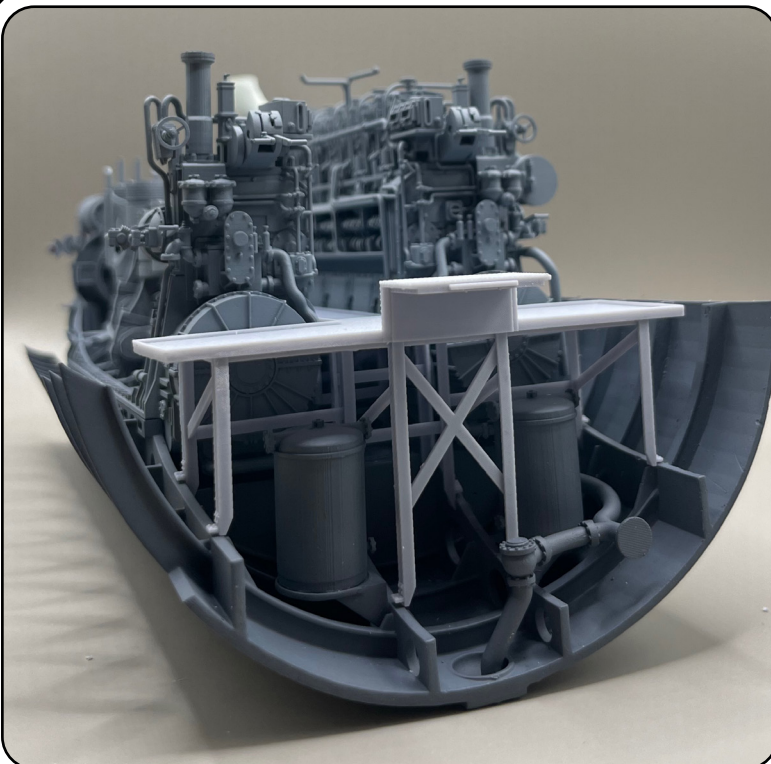
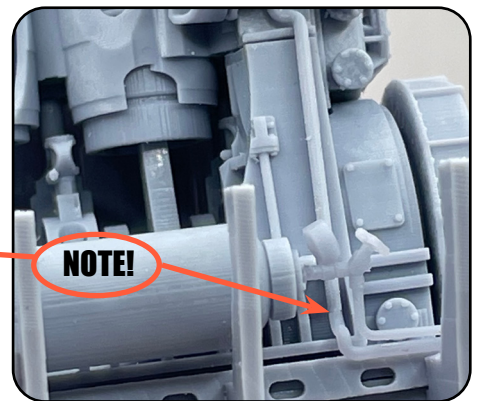
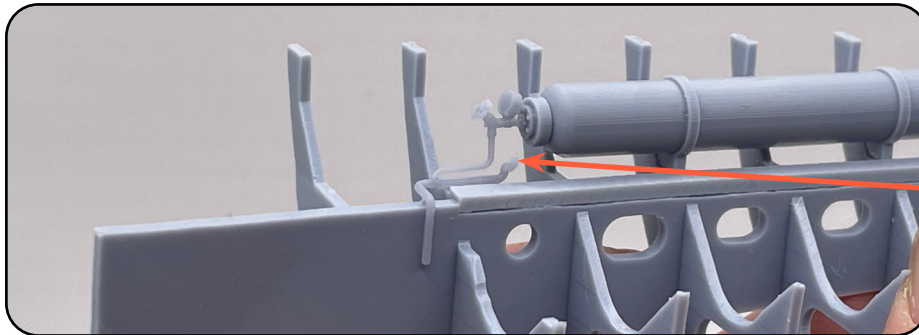




STEP 3

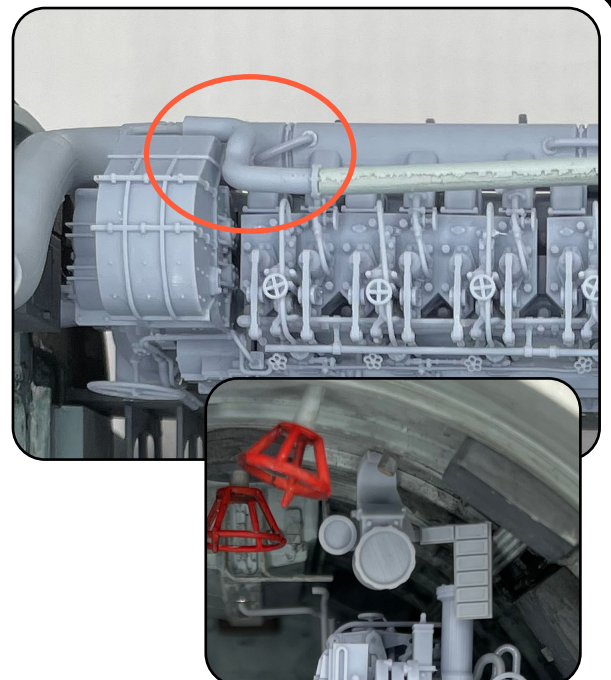
Gluing surfaces of pressure air bottle and oxygen bottle (yellow)

When you have glued the bottles. Install the pressure air bottle air line.
See below. (in the picture it is mounted on the Trumpeter frame)



STEP 4

Insert last part to frame. The Front floor!



STEP 5

Some parts to roof

Ventilation extension. Cut a suitable piece from the original pipe and glue the extension to it. Red Circle

And glue both gauges to roof between the lamp and the cell



RUDDER SHAFT

a little tip when gluing the axles together. put the supports side of each axel to the same direction.

glue the rudder shaft between the bulkheads. If you have other sets of Underground 3d Project set. be sure that the rudder shaft is at the same point as the room next to it. (in the picture it is the Trumpeter frame)

