

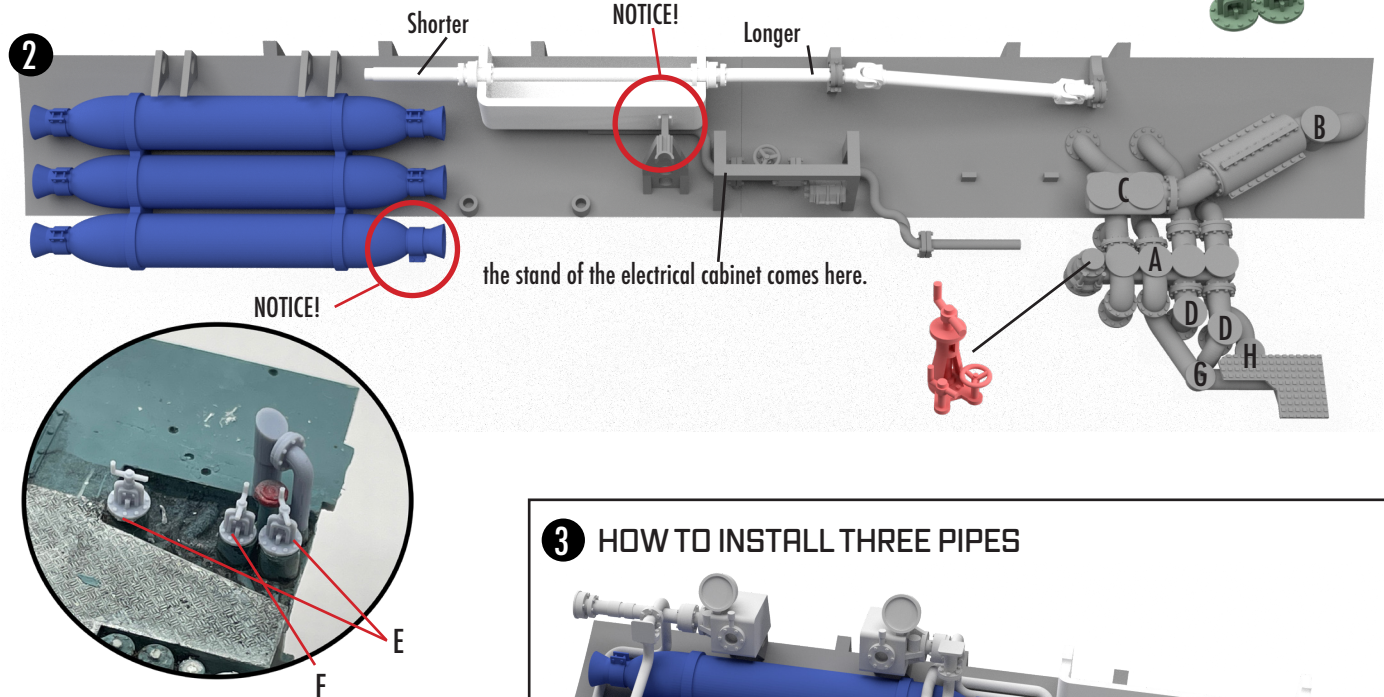
FEW TIPS TO BUILD FRONT SECTION

You can build all three parts before gluing to the model itself. (front and back schematic table and submersible pump part) There are some tips on which parts to install first. Test the parts fit before gluing

1) Glue the floors and the middle pipe first

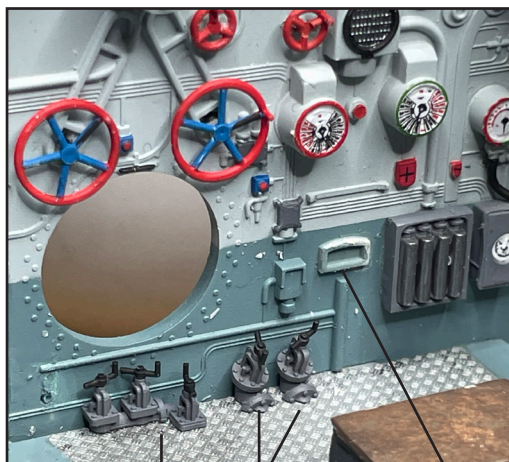
2) Glue the set of three oxygen tanks to the floor, as well as the longest control axel that goes through the tank. Be careful to glue the axel the right way

3) Install the control devices first, then the pipes

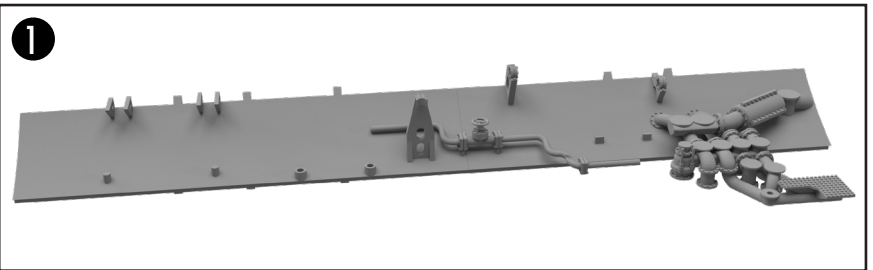


4) Otherwise you can glue the parts in the order you want and choose. I suggest that the "three valve trees" are the last ones you install.

5) This kit replaces all parts of the floor except parts P37, P75, N42 and N19. As well as bulkhead parts N9 and N13 (BBC-Box)

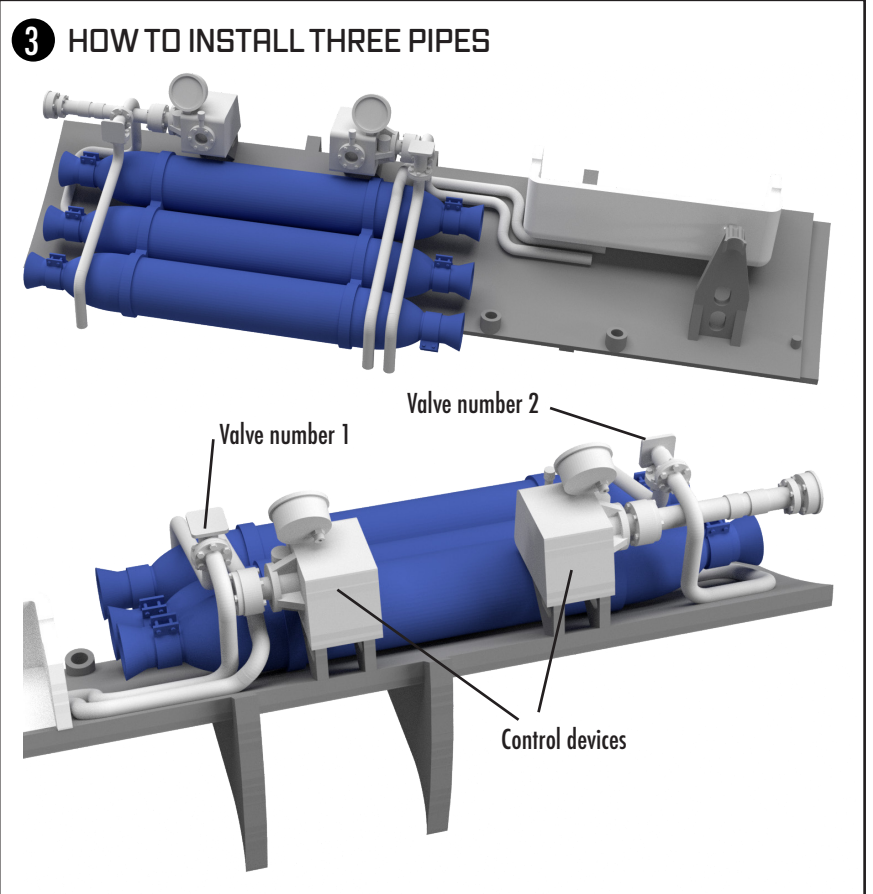
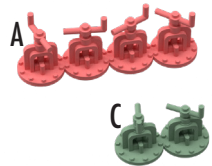


Valve set number 3
Valves number 4
You found a new vertical rudder control box in the kit



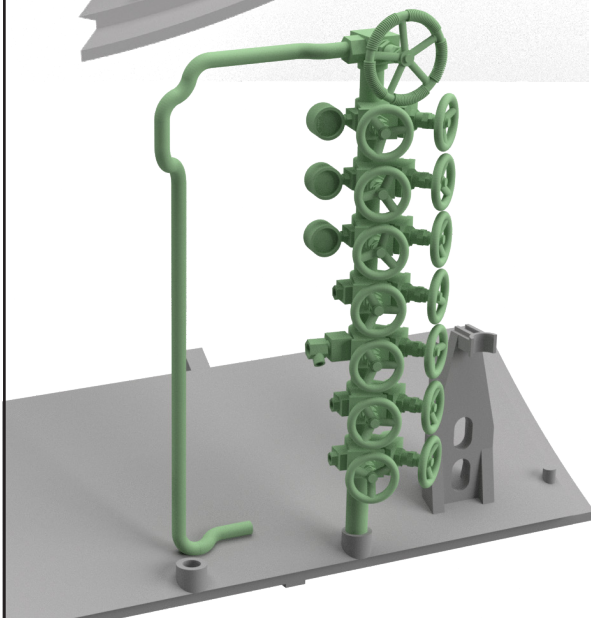
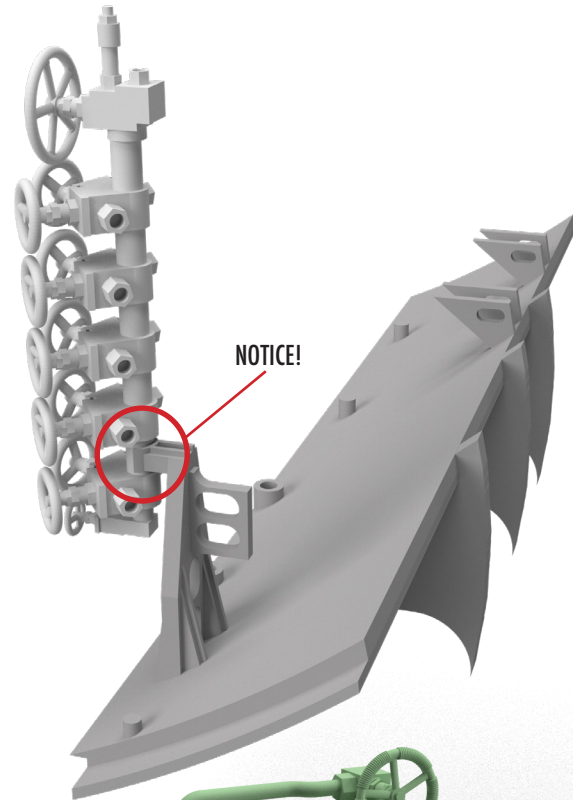
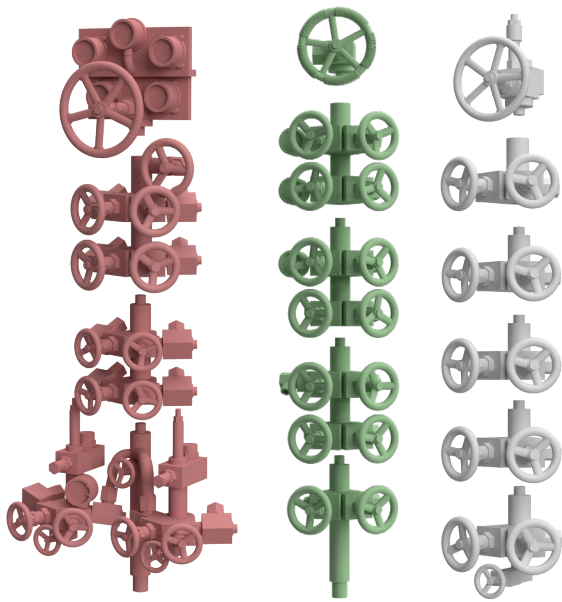
VALVES

NOTICE: Look closely at valve H. It only fits one way

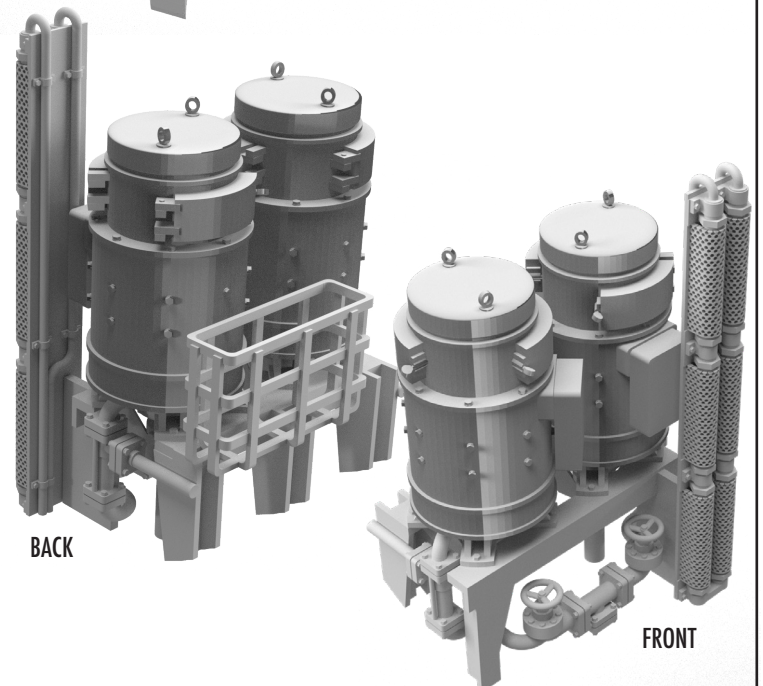
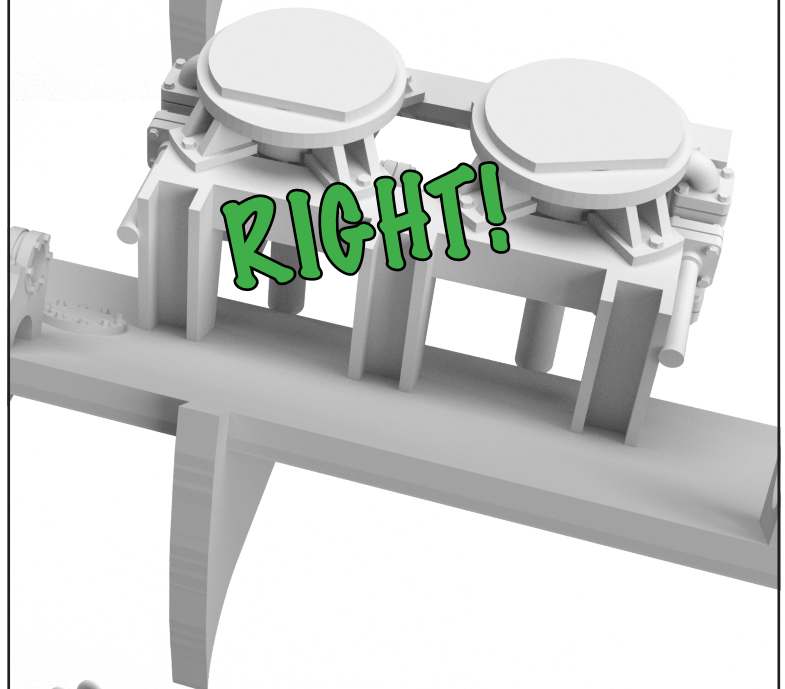
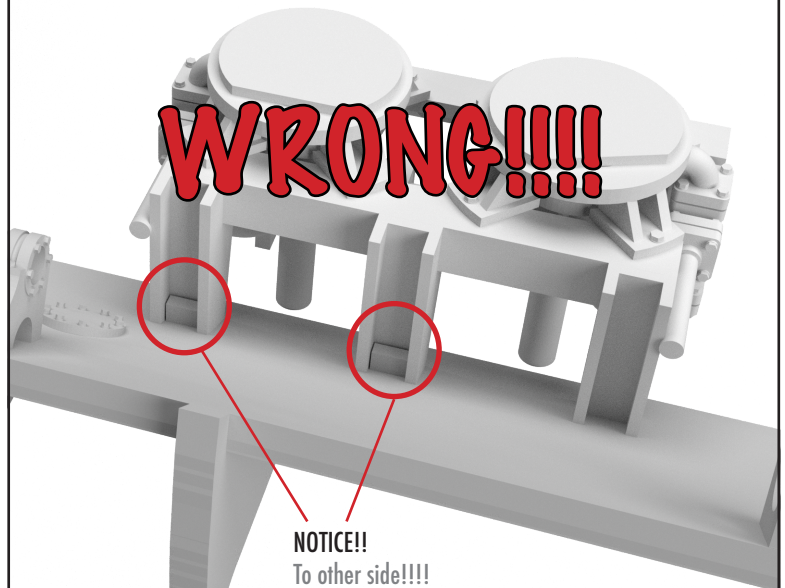


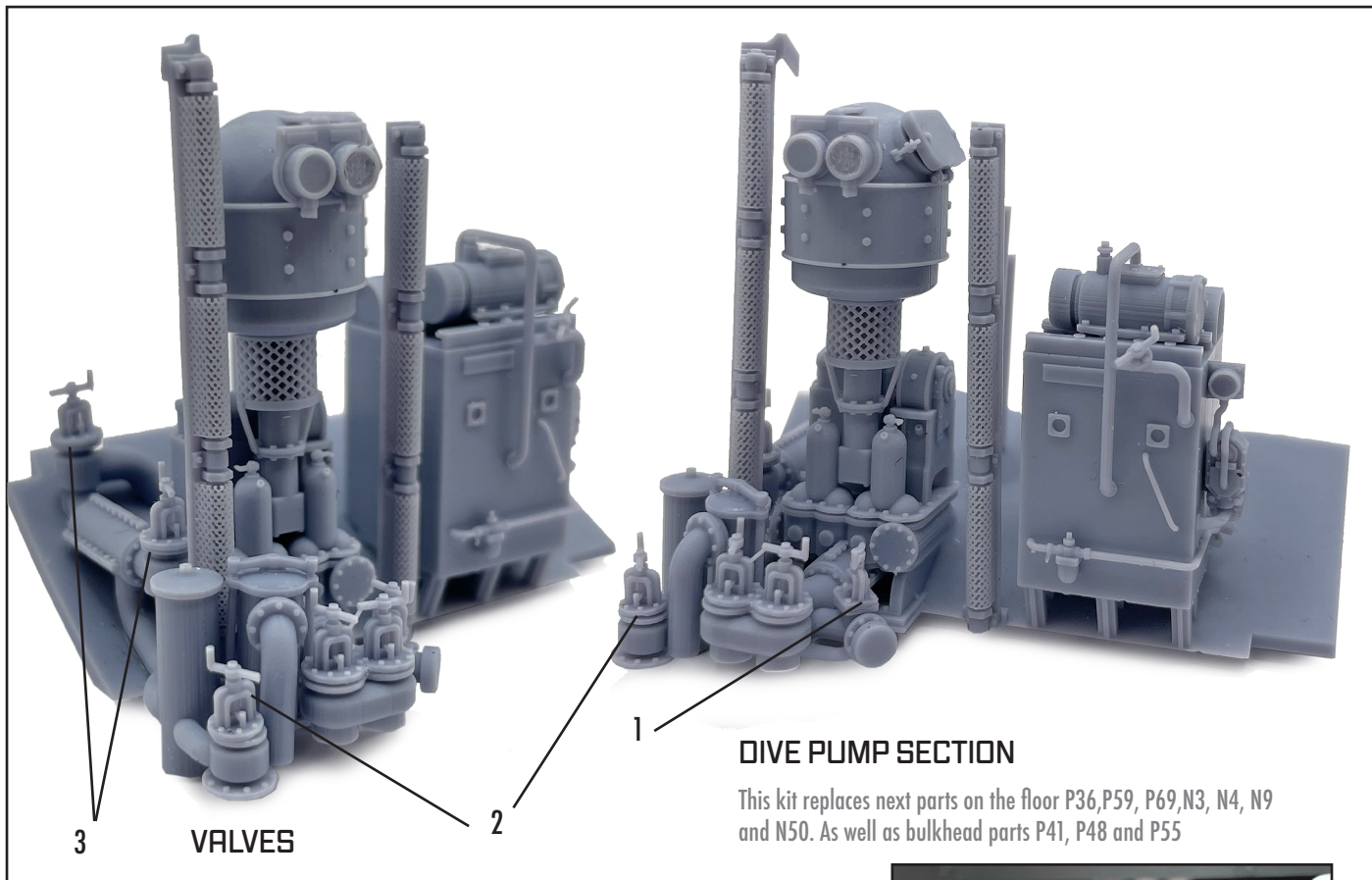
Control devices

VALVE "TREES"



HYDRAULIC PUMPS



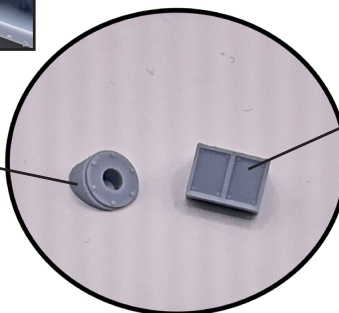
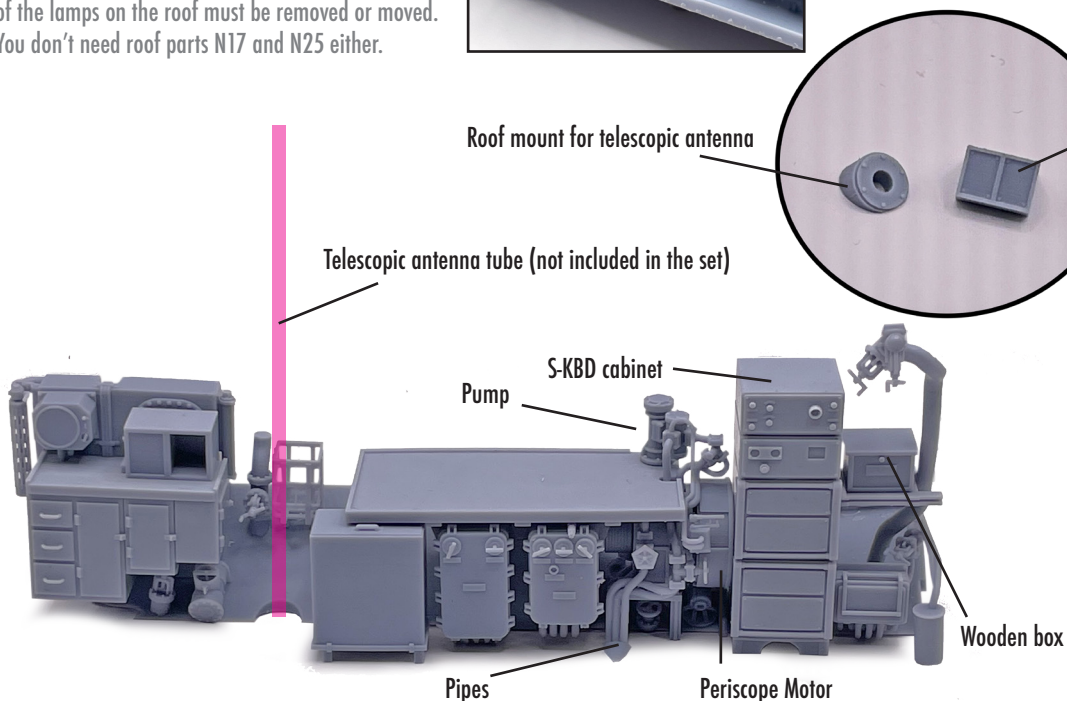
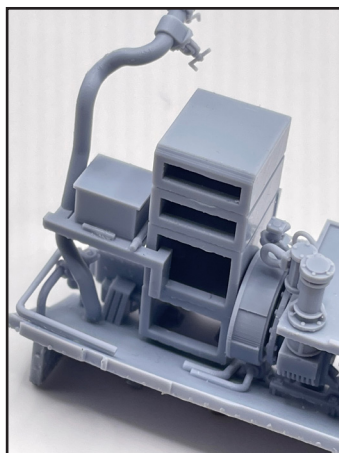


MAP TABLE

There few good advice when building a map table. Install the table pump last and see that it comes in the right direction. Also install the hydraulic piping and periscope electric motor before the table top.

The second photo shows how the table and piping are attached to the cabinet.

This kit replaces all parts of the floor. Because the S-KBD cabinet has changed its place in this kit, one of the lamps on the roof must be removed or moved. You don't need roof parts N17 and N25 either.



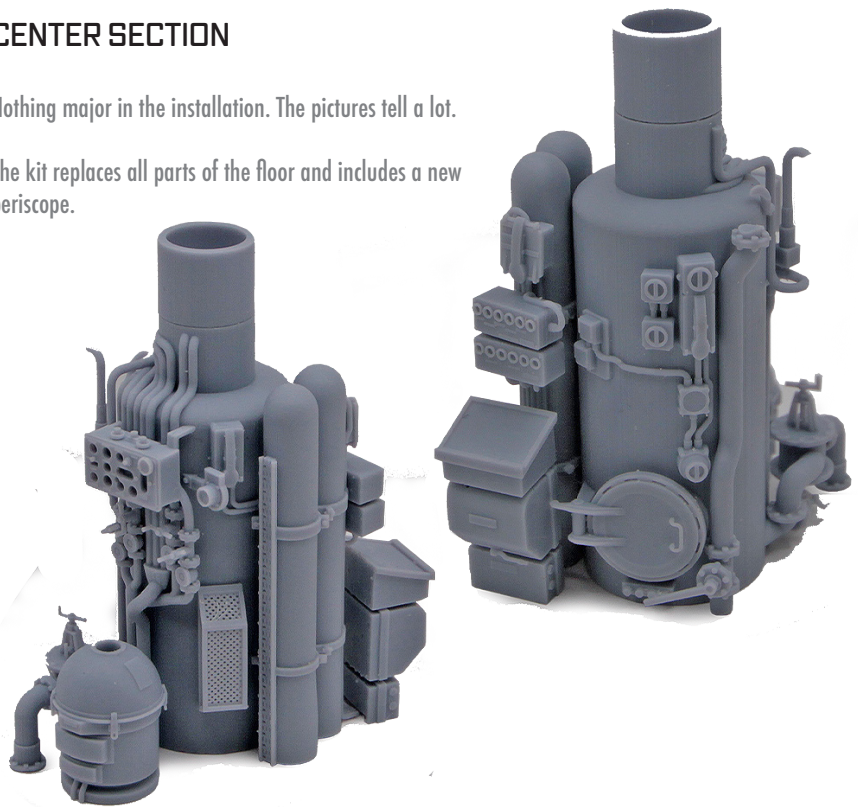


Main divepump installation. Make sure you don't glue too close to the bulkhead

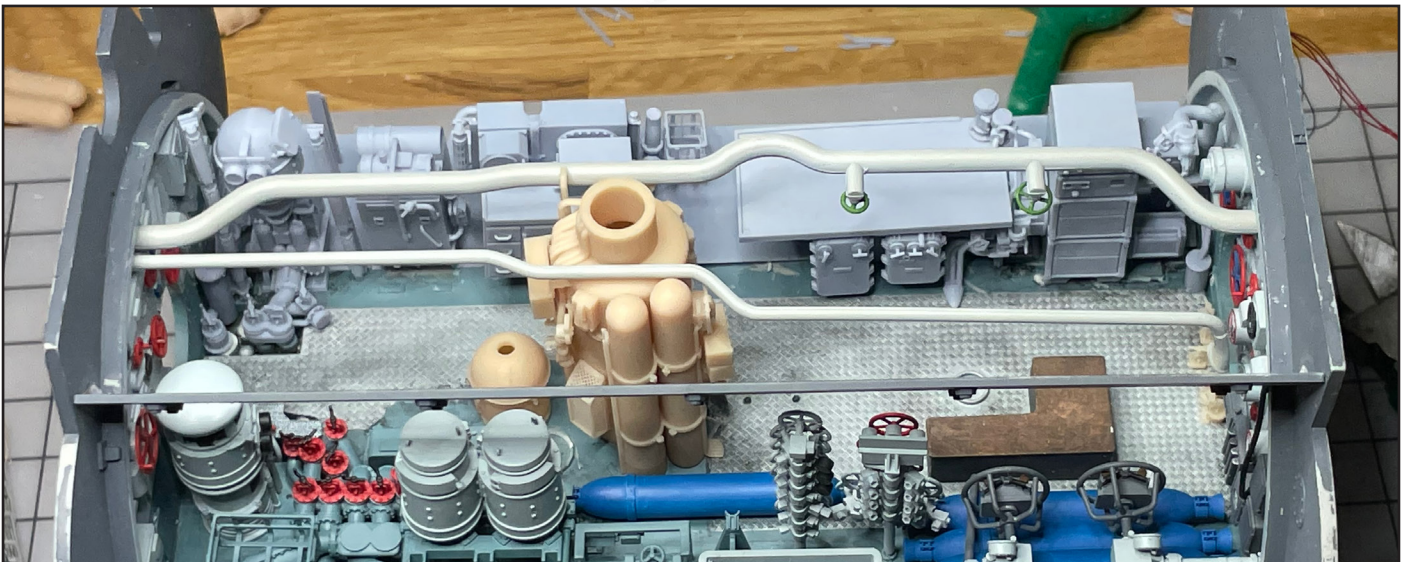
CENTER SECTION

Nothing major in the installation. The pictures tell a lot.

The kit replaces all parts of the floor and includes a new periscope.



This is how the roof pipes fit into place



5

4