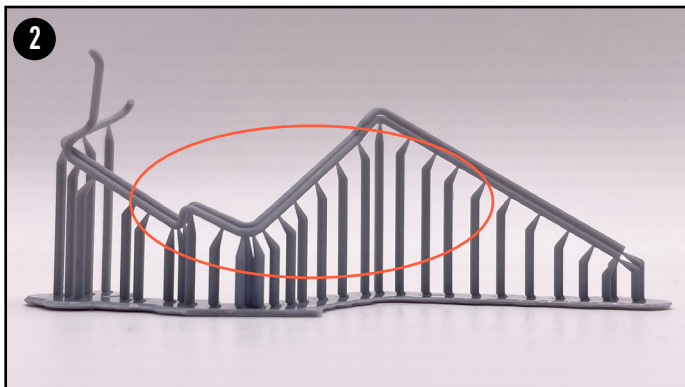
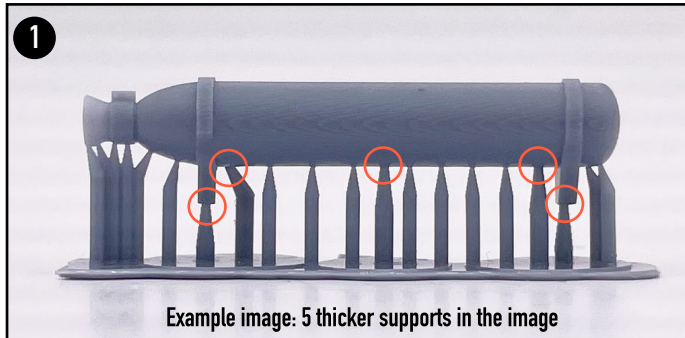


INSTRUCTIONS TO BATTERY ROOM 2/ FIRST LIVING ROOM

A few tips for removing supports from parts:

- Use side cutters or a SHARP knife
- When cutting the support, also support it with your finger on the other side
- First remove the parts from each other and then from the supports
- There is two sizes of supports. Remove the thick ones first. The smaller ones may even detach themselves after that. See picture 1
- In the thinnest pipes, I recommended to start removing the supports in the middle and proceed to the ends. But before that the thick ones. See picture 2.
- The set includes a few spare parts



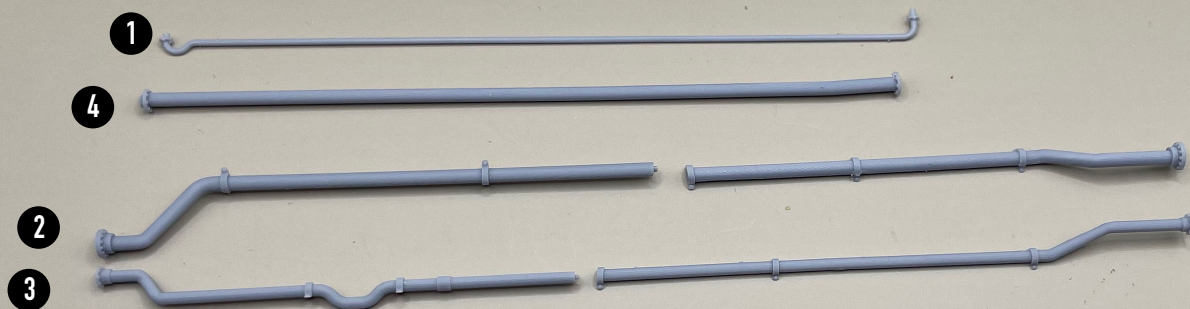
Modifications

- The original floor must be modifie

If some parts look different in the instructions than the kit. You just received the updated part. The better one

BATTERY ROOM 2

PIPES :: Sheet 1



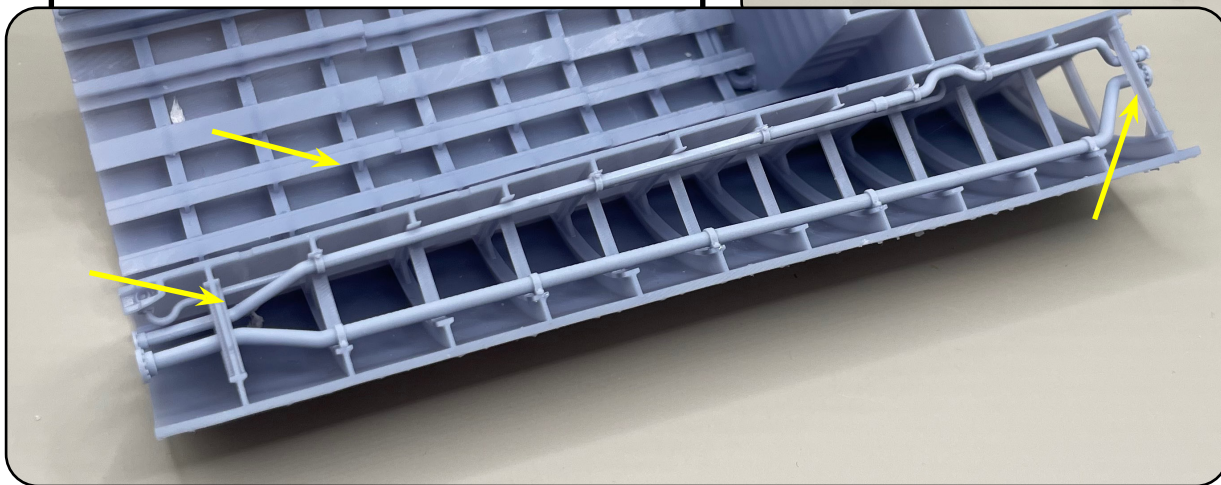
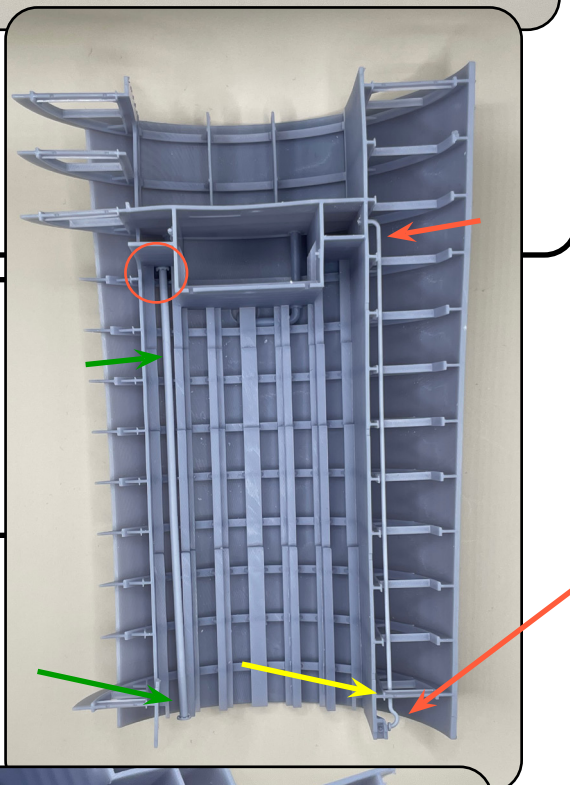
PIPES

- First, remove the picture tubes from the resin sheet.
- Glue tubes 2 and 3 together. You can recognize them by the fact that pipe 2 is thicker than pipe 3.
- First glue pipe 1 (Dirty water pipe from the toilets to the dirty water tank. See picture
- The rest of the pipes can be glued in the order you want. (See installation pictures first)

Dirty water pipe in placed. Before gluing: check that all the holes in the frame are suitable and are not blocked due to resin washing. Open them up with a drill or a scalpel. The pipe run under one support beam. Look at the yellow arrow. (Dirty water pipe = Red arrow)

Trim tube to forward torpedo room also installed in picture. I suggest you only use the glue on the red circle (Trim pipe = Green arrow)

Trim tubes to forward torpedo room installed. Some parts of pipes runs again under support beam. Look at the yellow arrow.



MORE TRIM PIPES :: Sheet 1

TRIM PIPES

1: Part of the trim pipe from the forward Torpedo room

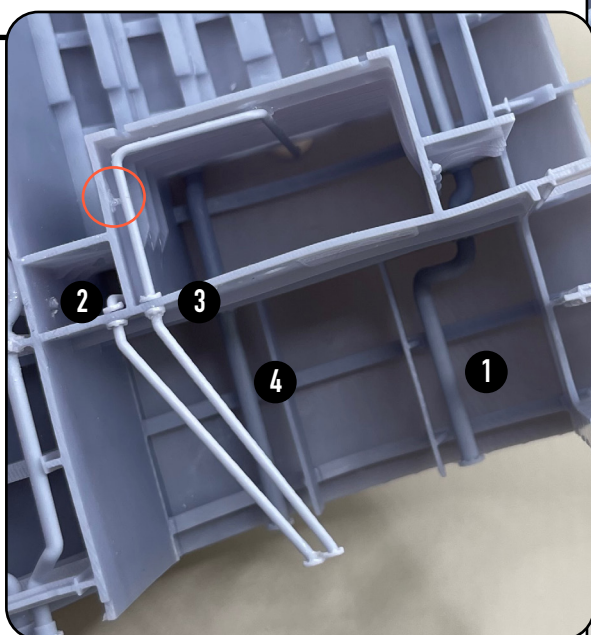
2: Trim pipe parts for dirty water tank

3: Trim pipe parts for S-Raum (active sonar space) On several U-boats, this space was actually used as storage, and no sonar was ever installed there

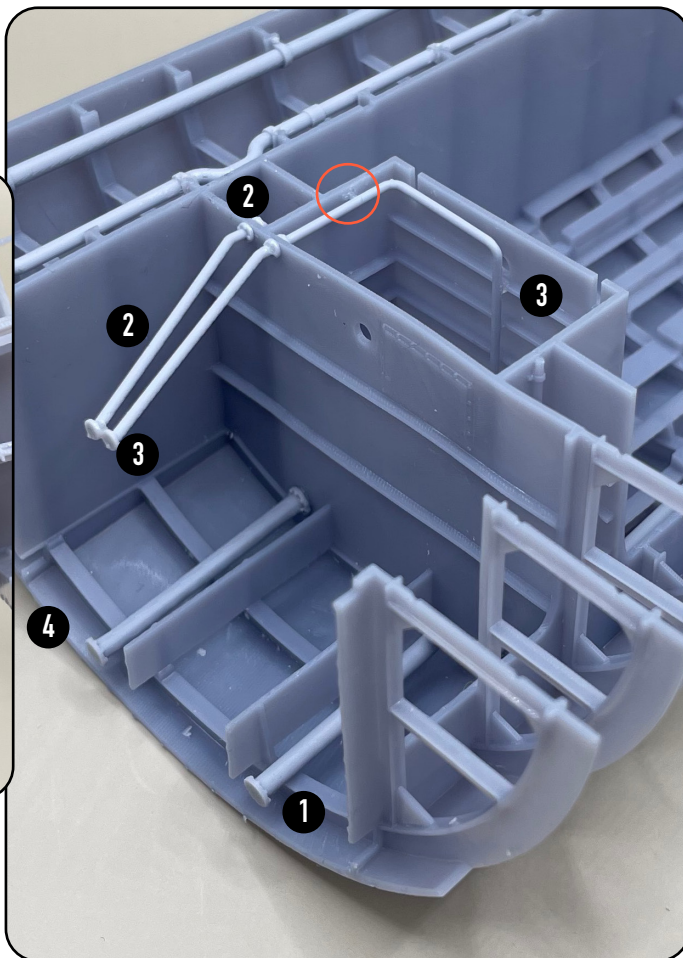
4: Part of trim pipe from the battery room in this department

INSTALLATION

You can install the pipes in any order you want. look at the picture (Red circle) to see what fits what



Pipes 2 and 3 run along the ceiling towards the navigation room. A small attachment point for the trim tube is marked with a red circle



AMMUNITION ROOM FLOORS :: Sheet 6



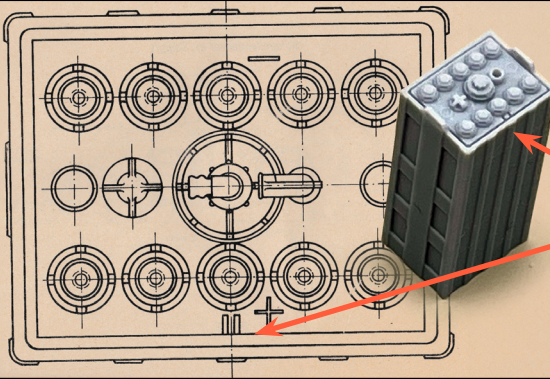
Next, you can detach the three pieces of the floor from the sheet 6 and install them in place. Narrow in the middle

BATTERYS

U-BOAT BATTERIES

This is drawing and result of one battery.

Just for information, if you are interested which side of the battery is the plus side

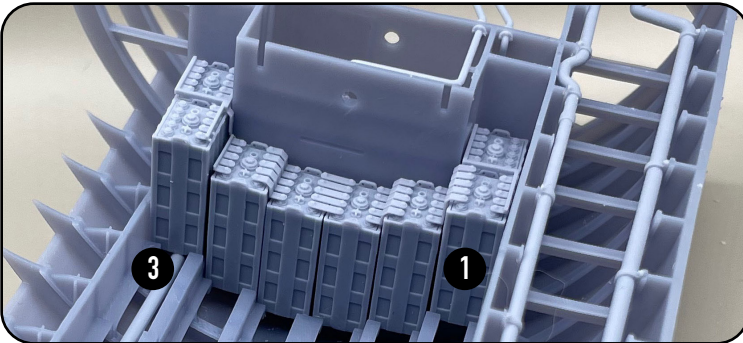
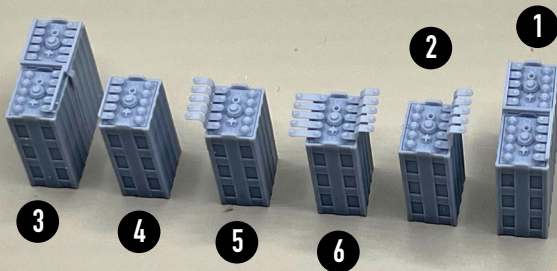


BATTERIES :: Sheet A

BATTERY SET A

Start installing the batteries from the A series and install the batteries in numerical order in the same direction as in the picture. All batteries in the all series are different. So be careful when installing them.

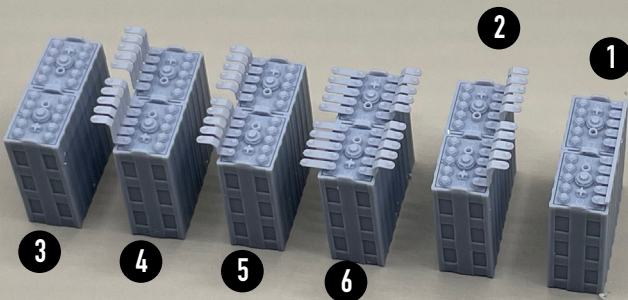
Battery 1 goes on the port side and battery 6 on the starboard side



BATTERIES :: Sheet B

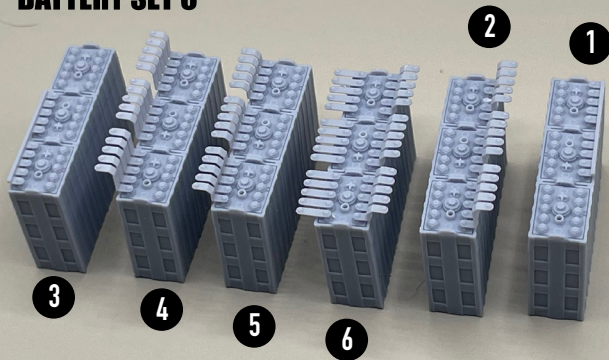
BATTERY SET B

Next battery set (B). The same numerical order of installation as in the previous one.

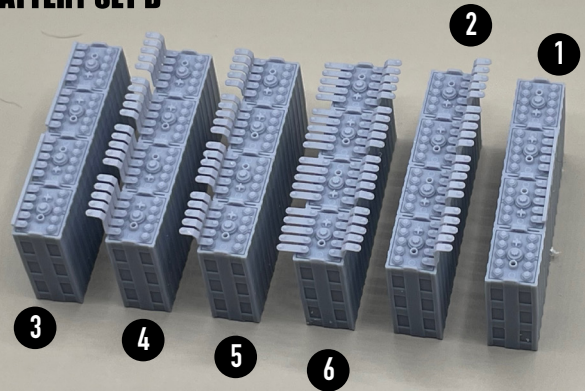


BATTERIES :: Sheets C & D

BATTERY SET C



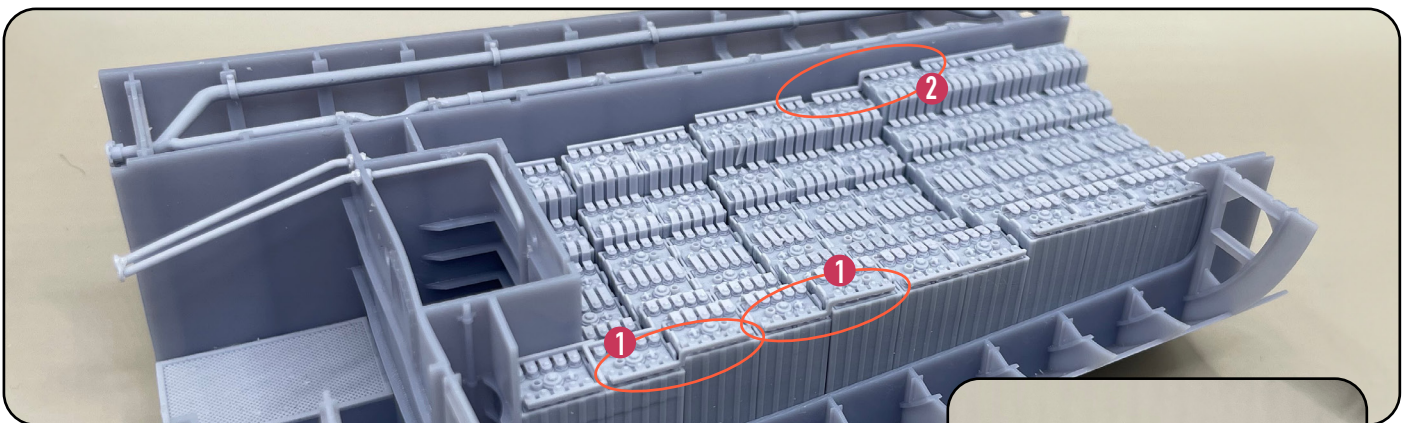
BATTERY SET D



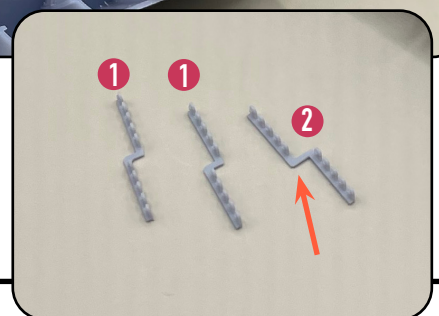
REST BATTERY SETS

Next battery sets (C & D). The same numerical order of installation as in the previous one. First Set C then D

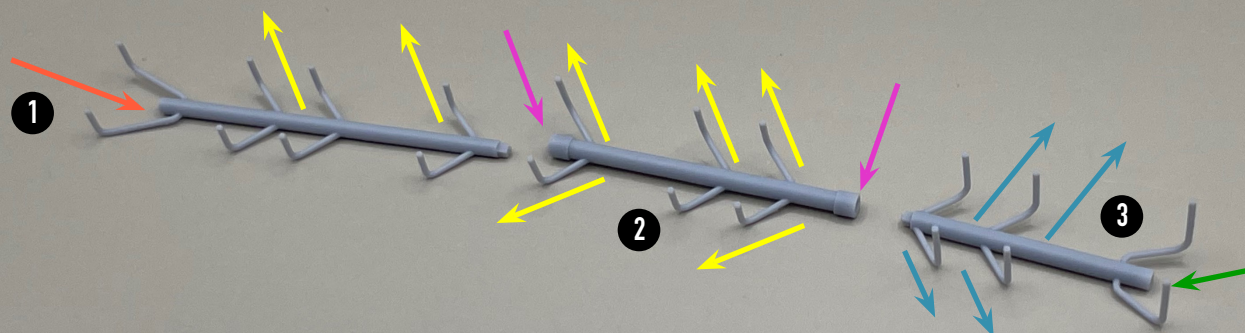
BATTERY TERMINALS :: Sheet C



In battery plate C has two different the battery clamps. You need two lower (1) and one higher (2). Look at the pictures and you will know how to install them



AIR VENTILATIONS :: Sheet 2



CENTER AIR VENTILATIONS 2

NOW VERY CAREFUL. The following parts are really sensitive. Also, be careful not to mix parts. It's really easy to do

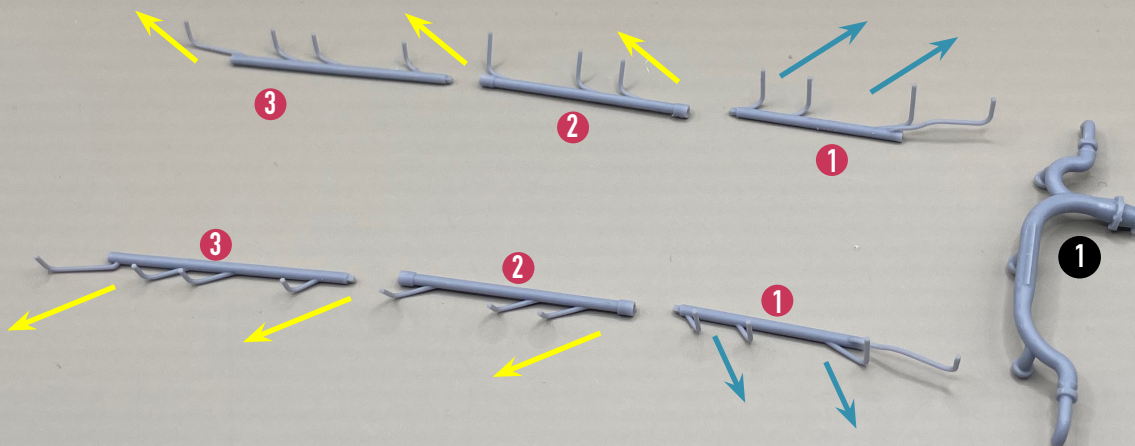
All pipes are in three parts:

- 1: Front pipe (No hole at the end of the tube (red arrow))
- 2: Central piping with attachment extensions at each end (purple arrow)
- 3: The back of the tube (Hole at the end of the tube (green arrow))

Be careful which way you put the middle pipe (2). It won't fit if it's the wrong way. The smaller pipes/hoses that coming to the batteries are in pipes 1 and 2 forward (yellow arrow) and in pipe 3 they are backwards (blue arrow). So be careful

Double check that everything is correct. Then glue the parts together

AIR VENTILATIONS :: Sheet 3 & sheet 5



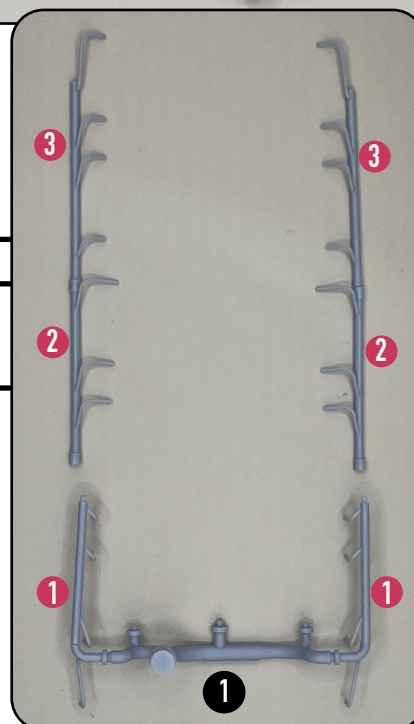
AIR VENTILATIONS 3

Next, air ventilations on both sides. The parts are opposites to each other.

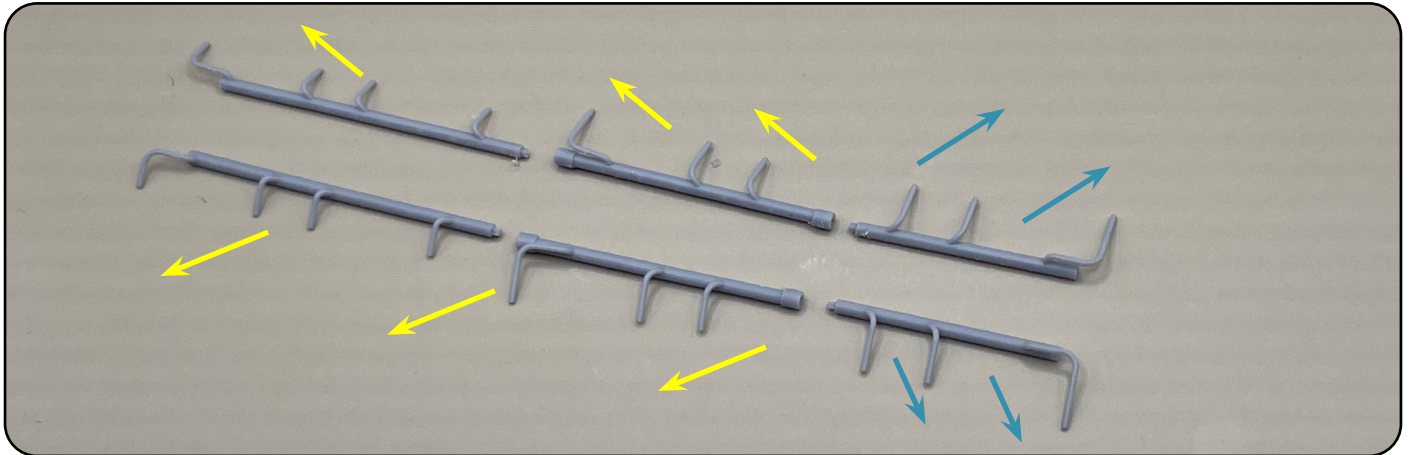
Make sure the smaller pipes/hoses are on the same side.

You can find the main manifold (1) in sheet number 5.

Glue tubes 2 and 3 together and tube 1 to the main manifold (1). See the picture. These pipes will be connected to each other later



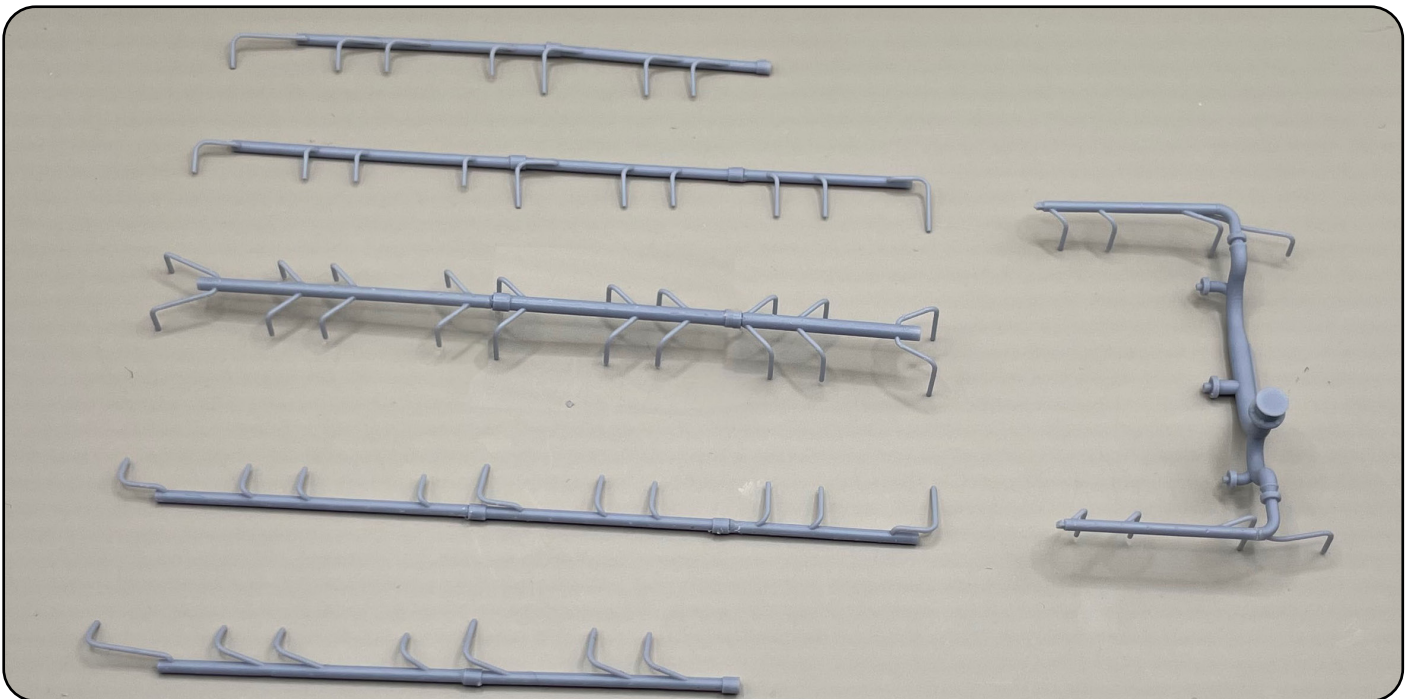
AIR VENTILATIONS :: Sheet 4



MIDDLE AIR VENTILATIONS 4

Finally, the middle pair of airventilation. Do the same as before and glue all three parts together.

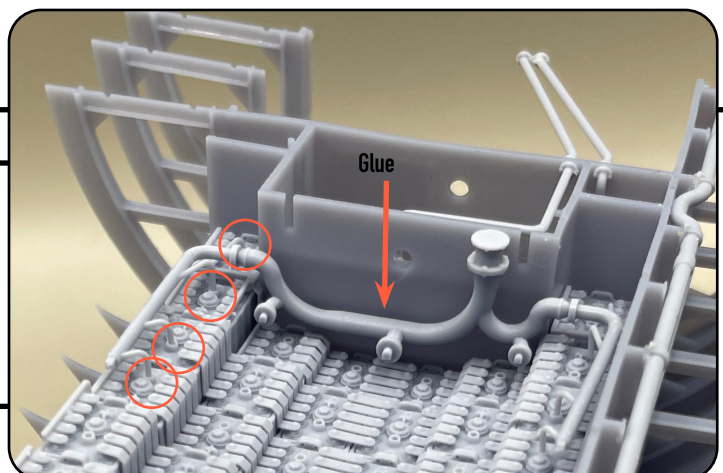
AIR VENTILATIONS



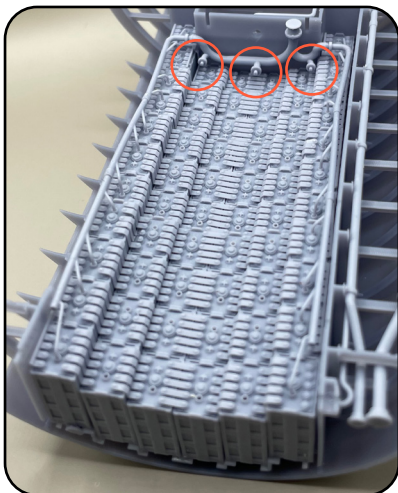
AIRVENTILATIONS

Your desktop should now look like this

Install the main manifold with pipes first. I recommend that you only use the glue to glue the main manifold. Use tweezers to push carefully the smaller pipes/hoses into the battery hole (red circle). It's probably easiest to start from the side of the navigation room and move towards the forward torpedo room



AIR VENTILATIONS

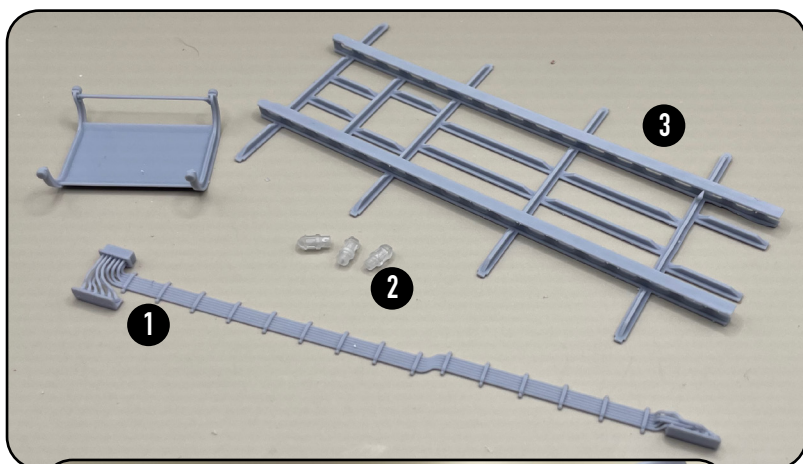


FINAL ASSEMBLY

Now glue the pipes of both edges together. You still don't need glue to glue the smaller tubes into the battery holes. They stand on their own. Use the tweezers again.

Install the center pipe first. If you think it's easier to install these, you can use the side cutters to cut off the attachment points (shown by the red circle). The picture shows the final result

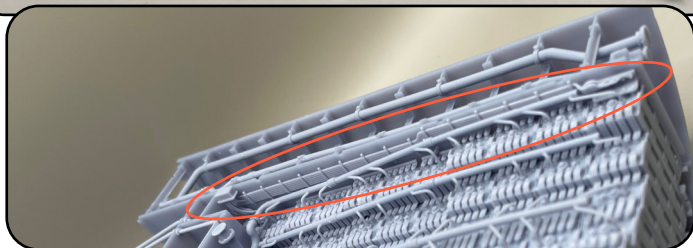
UPPER FRAME & LIGHTS :: Sheet 5



Install the parts in numerical order, starting with the battery cables first. See picture.

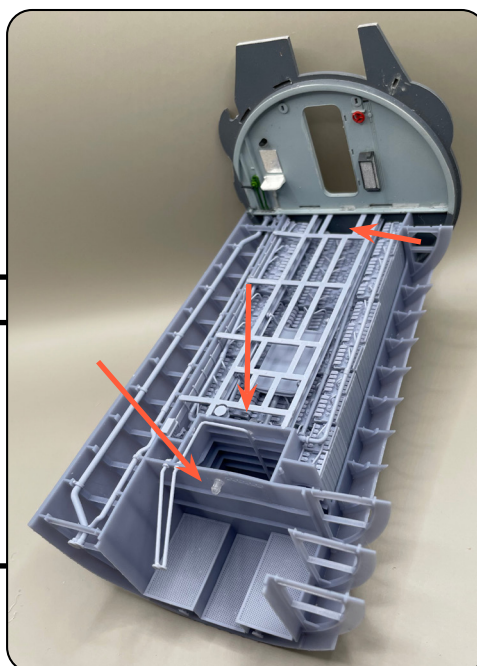
One lamp will be in the ammunition room and two in the battery room. For the second lamp in the battery room, you must be drilled an hole in the bulkhead between the battery room and the front torpedo room.

Before gluing the upper frame, install the sled in the middle of the frame rails. Unfortunately, the floor of the Trumpeter model is too low compared to the original. Although the batteries and the sled have been lowered compared to the originals, the gap between the batteries and the roof is so small that, for example, a 1/48 soldier can't fit in the battery sled to do maintenance work.



Finished result. The frame fits the Trumpeter's bulkhead exactly, but if it is tight some reasons, modify the Trumpeter's bulkhead.

The places of the lamps are marked with a red arrow



INTERIOR :: Sheet 6

FLOOR

Cut a 7.5mm x 1.5mm hole in the floor. There is actually a fuel tank at this point. There is a 1/1 template next to it. The dimensions of the hole are intentionally a little smaller than it should be, so carefully carve it to the right size.

1/1 template

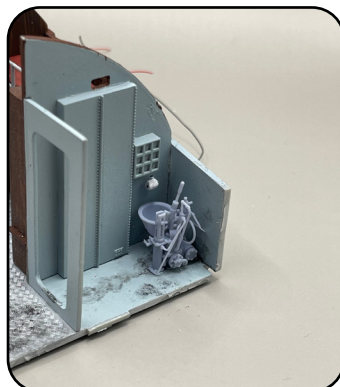
Assemble the 6 parts of the sheet. See the next picture

INTERIOR :: Sheet 7

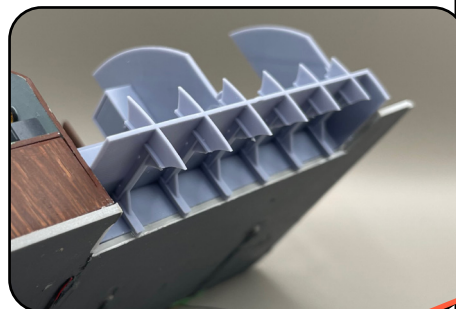
INTERIOR

The series has the following parts. Two tables, four mattresses, three full cabinets and three cut cabinets. You can choose which ones to put on or just mix them up. And finally, a new toilet seat with drain pipe.

These are easy to install as you can see in the following pictures



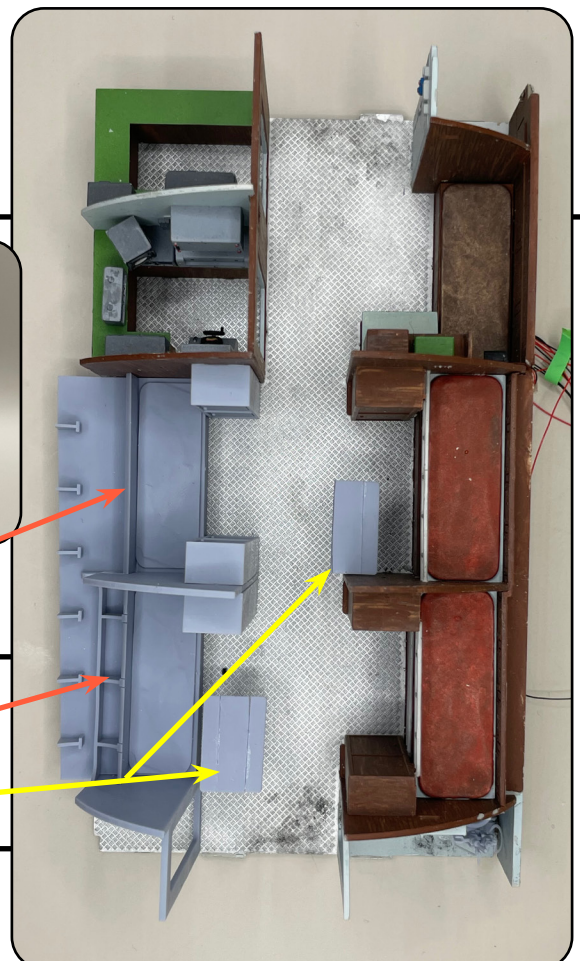
Install the toilet seat right next to the wall



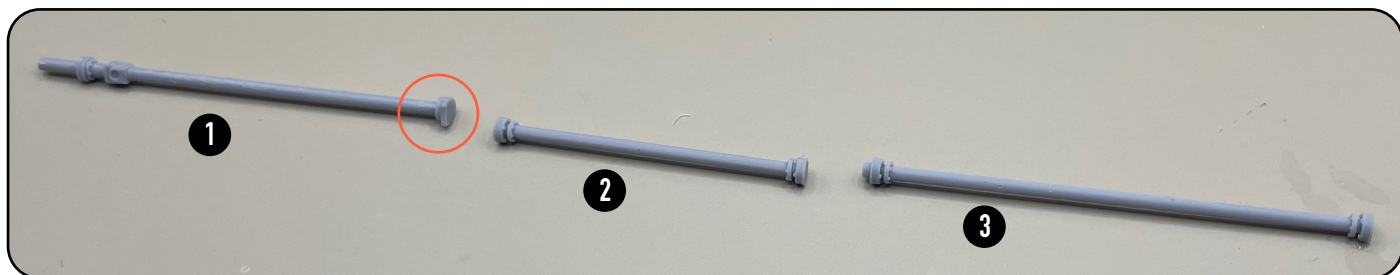
Top of fuel tank

Behind this wall is a drinking water tank, and in the other side of the sleeping quarters there is locker space for the crew

The right places for two tables



RUDDERS :: Sheet 7

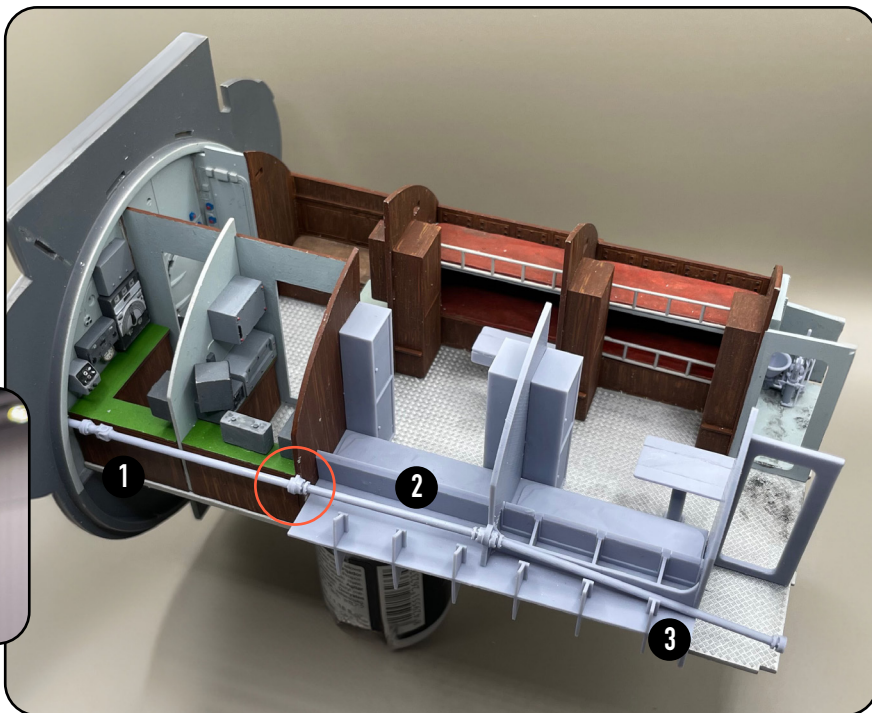
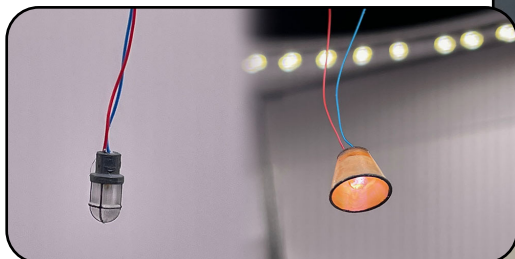


FINAL

Instal first rudders. See pictures.

After this, I recommend that you glue the upper part to the bulkhead on the side of the navigation room and the lower part to the bulkhead on the side of the Torpedo room. Then you put them together.

The set also includes additional Lamps for the crew room. Use them if you want



TIPS :: Sheet 7

If you want to make upper beds, there are two mattresses in the set for that. Use, for example, 0.8 mm thick and 3.8 mm x 1.3 mm styrene sheet as a base

FRAME

